

LLOYDS BRITISH TESTING LTD UK OPERATING CENTRES

HEAD OFFICE

Atlas House, 4/6 Belwell Lane,
Four Oaks, Sutton Coldfield,
West Midlands B74 4AB
Tel: 0870 197 5500
Fax: 0870 197 5599
Email: sales@lloydsbritish.com
Web: www.lloydsbritish.com

ABERDEEN

Wellheads Road,
Dyce,
Aberdeen AB21 7HG
Tel: 01224 727980
Fax: 01224 724799
Email: aberdeen@lloydsbritish.com

GLASGOW

Unit 4A Apex 1,
Tannochside Park,
Glasgow G71 5PD
Tel: 0870 609 0644
Fax: 0870 609 0645
Email: glasgow@lloydsbritish.com

LONDON

Unit 7 Thistlebrook Industrial Estate,
Eynsham Drive, Abbey Wood,
London SE2 9RB
Tel: 0870 609 9170
Fax: 0870 609 9171
Email: london@lloydsbritish.com

MEXBOROUGH

Unit 21,
Swinton Meadows Business Park,
Swinton
South Yorkshire S64 8BE
Tel: 0870 609 0688
Fax: 0870 609 0689
Email: mexborough@lloydsbritish.com

NEWCASTLE

Wincomblee Road, Low Walker,
Newcastle NE6 3QQ
Tel: 0870 609 0677
Fax: 0870 609 0678
Email: newcastle@lloydsbritish.com

SOUTHAMPTON

Unit 21,
Parham Drive,
Boyatt Wood Industrial Estate,
Eastleigh,
Hampshire SO50 4NU
Tel: 0870 609 9120
Fax: 0870 609 9121
Email: southampton@lloydsbritish.com

SWANSEA

Fabian Way, Port Tennant,
Swansea SA1 8PX
Tel: 0870 609 9130
Fax: 0870 609 9031
Email: swansea@lloydsbritish.com

WEST BROMWICH

Albion Road, West Bromwich,
West Midlands B70 8AX
Tel: 0870 609 9140
Fax: 0870 609 9141
Email: westbromwich@lloydsbritish.com

WHITEHAVEN

Unit 7B
Bridge End Industrial Estate,
Egremont,
Cumbria CA22 2RD
Tel: 0870 609 9150
Fax: 0870 609 9151
Email: whitehaven@lloydsbritish.com

WIGAN

5 Lockflight Buildings,
Wheatlea Industrial Estate,
Wheatlea Road,
Wigan WN3 6XR
Tel: 0870 609 9160
Fax: 0870 609 9161
Email: wigan@lloydsbritish.com

NATIONAL CALL CENTRE

Albion Road, West Bromwich,
West Midlands B70 8AX
Tel: 0870 609 9140
Fax: 0870 609 9141

NATIONAL LIFT DIVISION

Unit 21,
Swinton Meadows Business Park,
Swinton
South Yorkshire S64 8BE
Tel: 0870 600 1970
Fax: 0870 600 1971
Email: lifts@lloydsbritish.com

OVERSEAS

UNITED ARAB EMIRATES

Lloyds British Testing Ltd - Dubai BR
PO Box 88098, Dubai U.A.E
Tel: 00971 (04) 268 1466
Fax: 00971 (04) 266 8248
E-mail: sales@lloydsbritishdubai.com

GHANA

Lloyds British Ghana
PO Box AX 1388, Takoradi, Ghana
Tel: 00 233 247 248 245
Email: sales@lloydsbritishghana.com

KUWAIT

Lloyds British Kuwait
No. 25 Block 8, Street 105
South Subhan, Kuwait,
PO Box 26389 Safat
Tel: 00 965 476 3981 5
Fax: 00 965 476 4584 6
Email: sales@lloydsbritishkuwait.com

INDIA

Lloyds British India
Diamond Chambers, 4 Chowringhee Lane,
Suit IV, 4th Floor, Kolkata 700016 India
Tel: 0091 33 22522185
Fax: 0091 33 22522336
Email: sales@lloydsbritishindia.com

LIFTING

KEY CLIENTS OF LLOYDS INCLUDE:



EGYPT

Lloyds British Egypt
19st, 301 Fifth Sections
PO Box 11742
New Maadi
Cairo Egypt
Tel: 002 02 29704861
Fax: 002 02 27034915
Email: sales@lloydsbritishegypt.com

Attaqah

(Suez) Free Zone
Egypt
PO 43713
Tel: 002 02 29704861
Fax: 002 02 27034915
Email: sales@lloydsbritishegypt.com

7st - Dr:Ibrahim Shawki

Ibrahimya
Alexandria
PO Box 21524
Tel: 002 02 29704861
Fax: 002 02 27034915
Email: sales@lloydsbritishegypt.com



www.lloydsbritish.com

LIFTING SOLUTIONS



- **INSPECTION, TESTING & CERTIFICATION**

Inspection services to industry for nearly 200 years. Offering mechanical, tensile and compression structure testing. Full certification of all types of lifting equipment & compliance with legal requirements of LOLER & PUWER.

- **PRESSURE SYSTEMS and LEV's**

- **DESIGN, REPAIR & MANUFACTURE**

Providing solutions to unusual problems, managing entire projects and providing unparalleled service in renovating & refurbishment equipment.

- **MAINTENANCE SERVICES**

Leaders in preventative maintenance for cranes, hoists, lifts and industrial doors - tailored to suit your needs.

- **PRODUCT SALES**

- **TRAINING SERVICES**



LLOYDS
BRITISH



'Customer Satisfaction through Quality Service'

For almost 200 years the name of Lloyds British Testing has been synonymous with the very best in lifting engineering.

The Engineering Services Division offers an unrivalled service in:

- Inspection
- Testing
- Certification
- Design
- Repair
- Manufacture
- Modular Cranes/Hoists
- Crane Maintenance
 - Modernisation
 - Refurbishment
 - Breakdown & Repairs
- Industrial door & Loading Bay Equipment
- Pressure Systems
 - Written schemes
 - Examination
 - Testing
- Working at heights 2005
 - Fall arrest
- Lifts
 - Goods
 - Passengers
 - Disabled
- Training
- Product Sales

With strategically located centres nationwide, all staffed by expert, experienced, qualified personnel, Lloyds British Testing Ltd offers a reliable, responsive and fast service.

Our resources and purchasing power are the biggest in the business, so we can provide what you need faster and more cost effectively than anyone else.

With all of the backing and reassurance that can only come from working in partnership with the industry leader, which is why thousands of UK companies, including most of the leading names in British industry, choose to deal with us.

And with equipment so vital to production and safety can you afford anything less?



Contents

Inspection, Testing and Certification	4
Design, Repair and Manufacture	6
Rota Lifting and Handling Solutions	7
Modernisation and Refurbishment	8
Preventative Maintenance	10
Modular Cranes and Power Hoists	12
Fall Arrest and Rope Access	14
Pressure Testing and LEV's	15
SOMERS Material Handling	16
Total Lift Management	17
Lift Division	18
Access Division	19
Training	20
Product Sales	22
"Legislation - your legal obligation"	
Working at Heights	24
Lifting Guide and LOLER	25
Pressure Systems Regulations Guide	26
Work Equipment Guide and PUWER	27

Inspection, Testing and Certification



Testing

Testing & Certification

Lloyds British Engineering Services has unrivalled first hand experience of all kinds of testing techniques across a broad range of industries. We have qualified, expert personnel throughout the U.K and Internationally, and can offer:-

- Mechanical, tensile and compression testing up to 2,000 tonnes
- Testing either on-site or at fully certified and equipped test centres
- Over 2,000 tonnes of calibrated test weights
- Pre-inspection on cranes before testing
- Compliance with relevant quality standards of many major authorities and industries
- A speedy, efficient, quality service throughout the U.K and Europe.
- All work fully certified for legal compliance
- A complete manufacture, repair and testing service

Mechanical Testing

Our comprehensive facilities allow us to undertake a vast range of mechanical tests. These include:-

- Lifting equipment testing to meet any safety or quality standards
- Routine testing of chain and rope, to destruction if necessary
- Verification or calibration of S.W.L. for all types of lifting appliances from cranes to winches
- Specially fabricated structures tested for all industries
- Testing of ships and oil rig mooring anchors and a wide range of testing in ports and docks
- Testing of mobile cranes, fork lift trucks, lorry-mounted cranes, tail lifts, breakdown trucks etc.
- Testing to meet the specialised needs of any customer
- Floor loading tests
- Testing of ships' bows, passenger walkways and linkspans
- Testing of crush barriers, balustrades, street decorations, maintenance and window cleaning equipment
- Safety harness anchorage point testing
- We can audit your existing records if required and we are pleased to invite customers to witness tests

Inspection and Certification

Inspection Services

Lloyds British Engineering Services has been providing contract inspection to the industry for almost 200 years. Our vast experience includes specialist programmes for:-

- Cranes
- Hoists
- Loose lifting equipment
- Offshore equipment
- Local Exhaust Ventilation equipment
- Pressure Vessels
- Lifts
- Forklift Trucks
- Mobile Cranes
- Structures and more...

Our nationwide team of qualified engineers is equipped with personal hand held computers to provide immediate on-site reports either on paper or as a computer file. We offer certification, audit and inspection services, and can ensure that plant registers are kept up to date and legal obligations are fully met. Lloyds British colour coding schemes can be implemented to promote safe practice in the workplace.

Where third party verification is required Lloyds British Engineering Services will make sure that full documentation is provided and correct procedures are followed.

Innovation

Lloyds British Testing provide an extranet solution, which is a powerful web-based system for online collaboration. Using a web browser-based interface, it enables us to create private, secure collaborative areas of a web site. Each private extranet site provides all the tools we need to share documents, data, contracts, news, calendars and more. The extranet helps you work more effectively by providing a central repository for critical business information that can be assessed at anytime from anywhere.

Lloyds British Testing operate their own bespoke Microsoft Access database system, which can be tailored to suit individual needs. An individually formatted spreadsheet can easily be exported to give immediate indication of whether equipment is safe to use, inspection date, next inspection due date and details of equipment status i.e. defect, missing, unavailable or none.

Design, Repair and Manufacture

An in-depth service

The design and fabrication facilities available from Lloyds British Engineering Services can be used to create special equipment, for specialist applications, in all areas of the lifting equipment and materials handling industries.

Crane Gantries are designed using CADMAN and manufactured in accordance with international requirements using the relevant materials and welding procedures.

All gantries are designed to accommodate site conditions, with full site surveys carried out.

Runway Systems of all types are designed to meet the specific needs of the application in accordance with the appropriate standard.

The complete system is installed by Lloyds British – including hoist units, power feeds and lifting devices – with full erection and proof load testing service also provided.

Swing Jib Cranes are available in a standard range that is extensive enough to cope with most jobs easily. For a jib crane that is out of the ordinary, design and manufacture of a floor or column-mounted jib can be undertaken to fit the bill exactly; light or heavy duty, manual or power slewing, complete with power feed.

Lifting Frames, Spreader Beams and Container Lifting Frames.

All assemblies are manufactured from certified steel and all welding is in accordance with appropriate specifications.

Supplied from our extensive range of standard designs or to your specific requirements.

Full compliance to quality and design standards is maintained at all stages of manufacture. Ex-works proof load testing, inspection and documentation ensure you receive equipment conforming with the appropriate industry, national or international standards and totally fit for purpose.

Special Designs can be handled by Lloyds British Engineering Services. The service is based on an ability to cope with any problem which involves mechanical handling: drive units, winches and pneumatic or hydraulic control systems or fabrication design, starting with an initial design appraisal to test the feasibility of a project.

Design, Repair & Manufacture

A comprehensive service to provide solutions to unusual problems.

Our experience in the field of lifting and handling equipment means that our design team has the knowledge to undertake a vast range of projects, from a small spreader beam to complete assemblies.

Any piece of lifting equipment can be designed and manufactured by Lloyds British Engineering Services to meet any application regardless of the degree of complexity involved. In order to help engineers deal with unusual or exceptional lifting problems wherever they arise, we have strategically located Repair and Manufacture Centres, each staffed by highly qualified engineers to provide expertise of the highest order, and we can help with one-off or multiple requirements.

This means that an entire project can be handled from the initial enquiry and feasibility study to the design of the equipment, its manufacture and certification.

We also offer an unparalleled service in the renovation and refurbishment of lifting equipment, plant and related structures.

We can offer collection, inspection, repair, heat treatment, testing and certification from our own premises, under our accredited quality control systems to ensure that we deliver back to you on time.

Not only will your refurbished equipment have the performance and life expectancy of new, but our comprehensive service includes repainting to ensure that it looks like new.

The emphasis is on quality throughout; equipment, personnel, materials, finished work and customer service.

Rota Lifting and Handling Solutions



ROTADAVITS

Provide a simple portable method of lifting when used in conjunction with a chain block, ratchet lever hoist or winch, and can be assembled easily. There are a range of davits and sockets to suit your application. Rotadavits are designed and manufactured to BS 7333.



SWING JIB CRANES

Manufactured to customer specification and BS 7333. Jibs can be mounted onto a suitable concrete base, structural columns, pillars, walls or directly onto machinery. Options include manual or powered hoisting, manual or powered slew up to 360°, underbraced, overbraced and knuckle design.



CRANES/MONORAILS/GANTRIES

Our expertise extends across the full spectrum of fabrication offering simple or complex solutions to meet your specific needs. Systems can be manual or powered ranging from light construction to double girder EOTC, incorporating track switches, turntables, drop sections and latching devices if required.



LIFTING BEAMS/FRAMES/GRABS/TONGS

Lifting and handling is as diverse and challenging as the variety of items that are required to be lifted. Rota specialise in designing, manufacturing and testing many different beams, frames and handling devices to meet your requirements.



VACUUM LIFTING

Rota have designed and manufactured vacuum systems for major organisations in a variety of industries including aerospace, concrete, glass, metals processing and general engineering. All Rota vacuum systems are designed to meet specific customer needs and comply with relevant guidelines.



BESPOKE HANDLING EQUIPMENT

Rota's designers are experienced in producing pneumatic, hydraulic, motorised and manual equipment. Therefore when given an unusual or difficult handling problem we are able to apply a wealth of talent and experience to provide a tailored solution.

Modernisation and Refurbishment





Lifting solutions for ageing cranes

- Increased capacity using modern day components by up to 25% of the existing S.W.L.
- Improved reliability & safety by introducing state of the art technology & components
- Lower maintenance costs
- Total customer satisfaction, ensuring year on year reliability

No matter what manufacture or age of the crane, LBT Technical Service Division can engineer a solution to meet your production and budget requirements. With the new technology available to us, modernisation and performance enhancement will extend the useful life of the Crane at affordable costs and time scales to suit your demands.

Remote controls for labour cost saving and improved shop floor safety.

Where the operator of a machine can be moved to a safer, more efficient location, Portable Remote Controls have helped prevent serious injury while increasing efficiency and productivity for many Industries. Lloyds British Testing is leading the way with technological innovation, experience and quality backed by an unparalleled worldwide service organisation. Most remote control applications are built around one of our core products. For specialised applications, we have engineered our core systems with specific features to meet these requirements.



Preventative Maintenance

The Leaders in Crane & Industrial Door Preventative Maintenance Programmes Tailored to Suit your Needs.

Our Philosophy

The number one force is the never-ending need for users to lower their costs.

Our approach to maintenance focuses on prevention and prediction rather than on repairing when a failure has occurred. This approach gives our clients and us a great cost advantage. Our customers will experience reduced downtime and other surprises will be kept to a minimum. Both overall maintenance costs and costs due to lost production will be reduced.

When we perform work, it is normally a planned activity; the engineer carries with him the right tools, the right spare parts, the correct technical documents. The engineer himself is chosen based on his skills for the job and not based on whoever happens to be available. This all amounts to efficiency, and further to cost advantage.

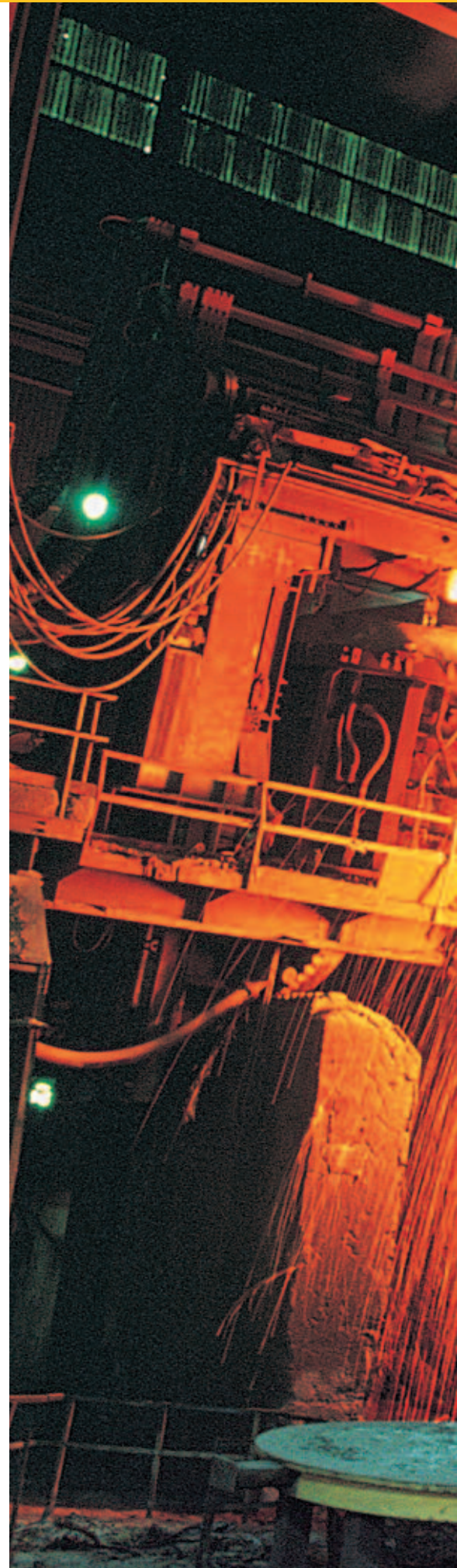
Standards of Service

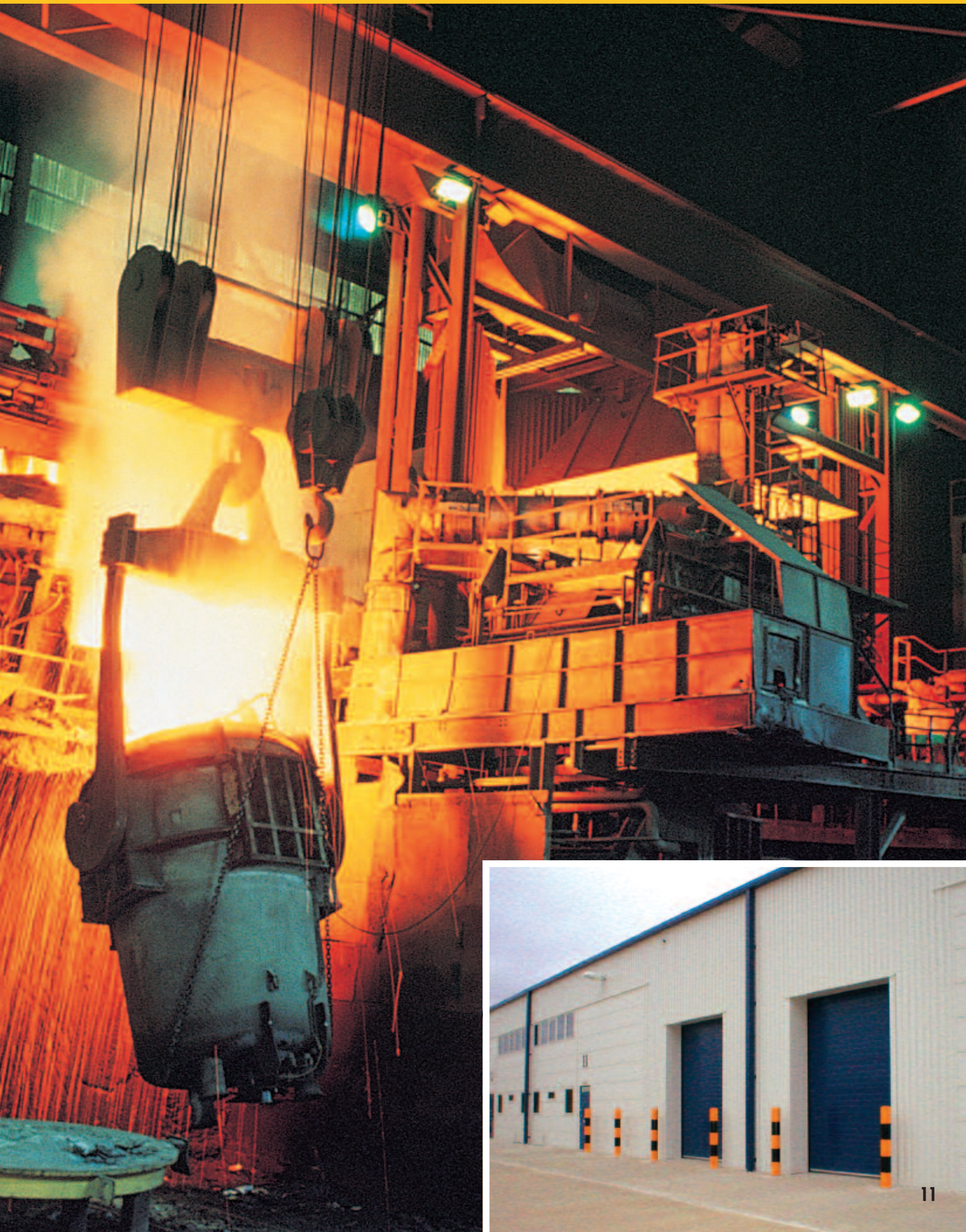
- Regular maintenance visits by specialist, qualified engineers
- 24 hour hotline – 24 hour, 7 day, 52 week availability
- Regional technical advisory service
- Preferential repair date
- 2 hour guaranteed response time
- Priority breakdown service
- Personalised contact

Preventative Maintenance Programme

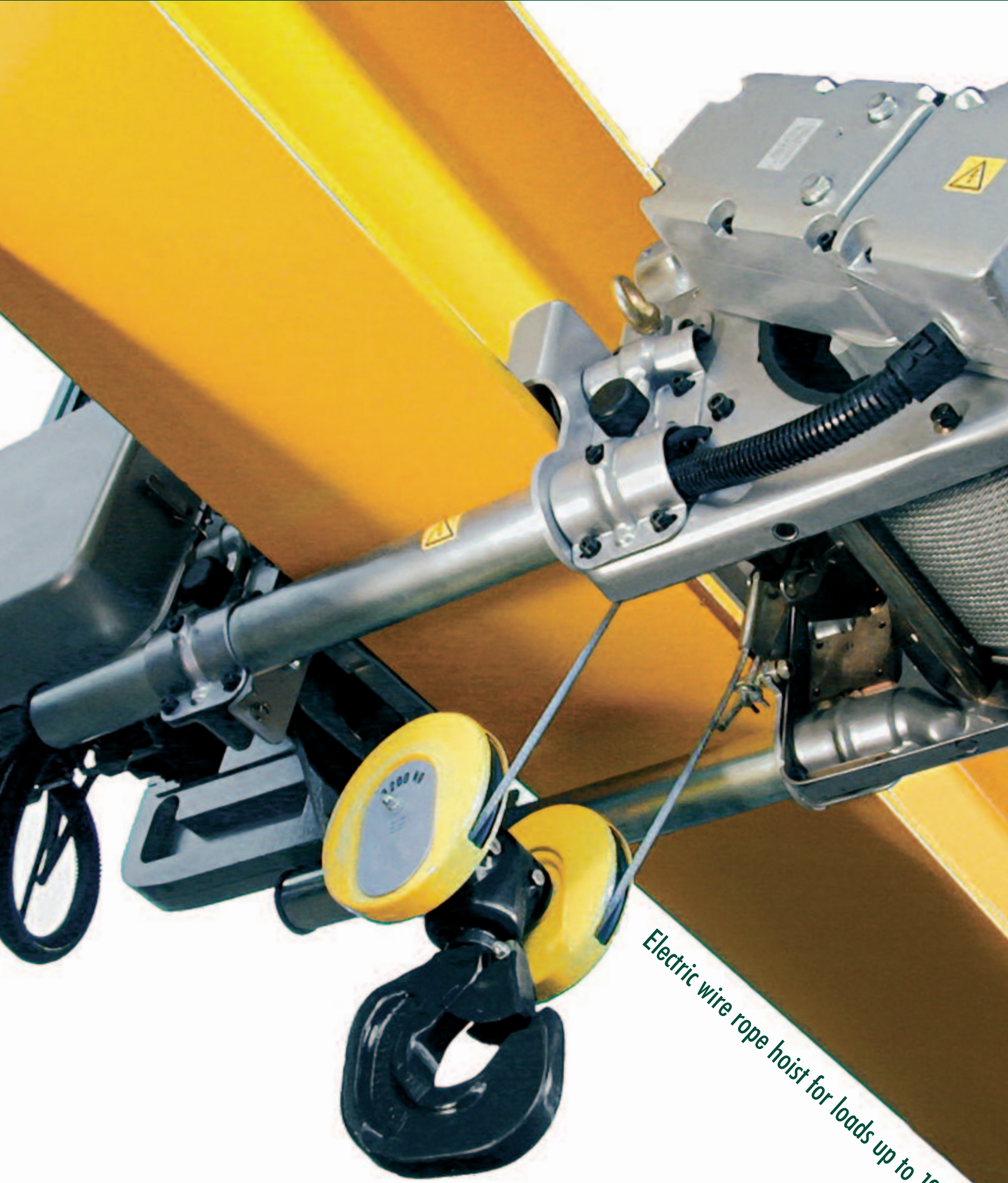
Our Aim:

- To improve efficiencies, by ensuring a maximum up-time for continuous production
- To reduce unplanned work by identifying components which create safety and/or production consequence
- To implement a schedule of planned maintenance, tailored to meet the demands of production
- To advise on investments in repair or replacements
- To ensure you maximise your return on the investment made





Modular Cranes and Power Hoists



Electric wire rope hoist for loads up to 100 tonnes

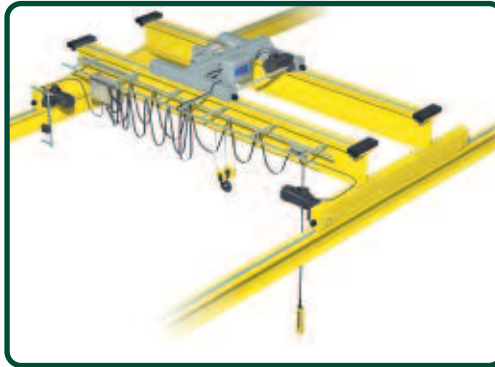


Crane solutions

We supply the crane solution for your application, designed to run on your gantry of the existing structure. The electric overhead travelling cranes are designed and manufactured in accordance with individual dimensional and performance data and conform to BS466 1984 and BS2573 1980 and to the duty specified for indoor use.

Complete components for:

- Single-girder bridge cranes
- Double-girder bridge cranes
- Single-girder underslung cranes
- Wire rope or chain hoists



Fall Arrest and Rope Access Providers

Safety at Heights System

Lloyds British is an approved supplier and installer of fall arrest systems in both the engineering and construction markets and works in conjunction with the leading manufacturers of the product.

The introduction of Health and Safety Legislation has passed the responsibility to the employer to ensure that any employee required to work at heights must be suitably protected from any potential falls or hazards.

When you choose Lloyds British for your height safety equipment, you enjoy many unrivalled benefits:

Maximum Choice. We supply the widest range of height safety products on the market – from harnesses and lanyards to the most advanced safety systems, designed to suit your specific needs and budget.

Individual Solutions. We can send a specialist engineer to assess the risks on your site, and recommend a solution to fit your precise requirements.

The latest product designs.

When you choose Lloyds British you benefit from the ultimate in safety engineering. We use the highest performance materials and advanced manufacturing processes to develop products which are reliable, affordable, and incredibly easy to use.

Lloyds British Testing specialise in Maintenance, Inspection and Testing of Height Safety Systems in accordance with all relevant British Standards.

All Safety systems require a Thorough Inspection and Re-Certification on an annual basis, together with a Proof Load Test to ensure the continued safe operation of the system.

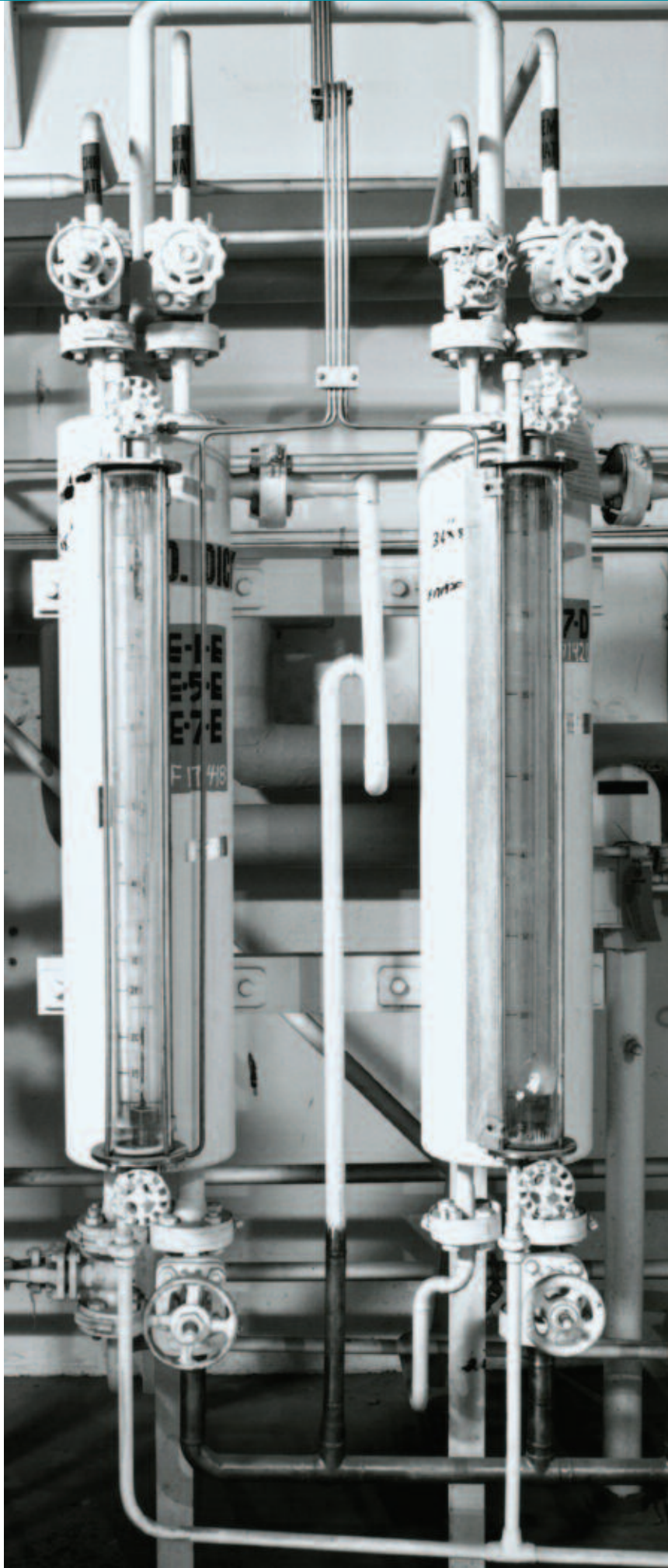
Rope Access

Specialising in providing inspection, maintenance and repair on all types of lifting, access and supporting structures in remote access areas, confined spaces and wind turbines.

All our Engineers are trained to the required industrial standards.



Pressure Testing and LEV's



Lloyds British Engineering Services offers the complete pressure systems service for testing and inspection, consultancy and certification to PSSR 2000

- Pressure testing carried out using equipment and procedures approved by Lloyds Register of Shipping
- Mobile testing for on-site work
- Complete de-commissioning, repair and re-commissioning service where required
- Comprehensive range of supplementary techniques available; such as NDT, endoscopy etc.
- Pressure system surveys to advise on compliance with regulations
- Production and certification of written schemes of examination

Our inspection, testing and certification work is scheduled and carried out to ensure minimum disruption, minimum down time and maximum productivity.

Qualified engineers and an independent, fully guaranteed, reliable and cost-competitive service ensures full compliance with the law and peace of mind.

Local Exhaust Ventilation Equipment Control of Substances Hazardous to Health Regulations 2002

Lloyds British Testing's inspection engineers can carry out thorough examinations and testing using smoke tubes/bombs, vane anemometers and pitot tubes/manometers to ensure your equipment adequately controls hazardous substances in the workplace

Typical high risk areas are:

- Welding Bays
- Shot Blasting Areas
- Fume Cupboards
- Metal Grinding Areas
- Around Wood Working Machinery
- Areas where Noxious Gases are/could be released in the workplace

SOMERS Material Handling

Global Handling Solutions

Motorised Coil Lifters

From the most advanced Coil Sensitive Telescopic Coil Lifters to basic C Hooks. Somers will provide the product to meet your requirements.

Lifting Systems

Bespoke applications to suit particular problems. Somers have a wealth of experience in the design, manufacture and supply of both manual and automatic material handling systems.

Tongs

Gravity Tongs using the ultra reliable Somers Automatic Mechanism or Hydraulic/Motorised tongs are available to suit both hot and cold product handling. Capacities range from 100 kilos to 200 Tonnes.

Slab and Pack Handlers

Push button controlled to provide a safe handling solution without manual intervention to protect your workforce and facilities.

Grabs

In instances where the component shape or access is a problem. Give Somers the chance to provide a grab to suit.

Slewing Hooks

Uncontrolled rotation of loads can result in injury to personnel and dangerous occurrences. Somers Slewing Hooks enable the operator to accurately position and rotate loads in a safe and efficient manner.

Sheet Lifters

If you take away the manual element of sheet handling, you take away the hazard. Somers Telescopic Sheet Pack Lifters are motorised to remove the hazard.

Downenders

Vertically Cast Aluminium Slabs are safely downended with Somers Slab Downenders, developed to suit the requirements of the world's major Aluminium producers. If you need to downend, upend, tilt or rotate anything, give Somers the chance to provide a safe and efficient solution.



Total Lift Management



Ask yourselves:

- Do you have an Appointed person?**
- Do you have a Lift Supervisor?**
- Is there a Method Statement?**
- Is there a Risk Assessment?**
- Have you a Qualified Slinger/Signaller?**

If the answer is "NO" then you need Lloyds Total Lifting Management.

Providing a full and comprehensive management package, our personnel are fully trained and competent in compliance with the regulatory bodies.

Our management package provides you with an assurance that a 'No Risk Policy' is in place.

We service all industry sectors throughout the U.K. and have the capacity to service any international requirements.

Providers of:

Lifting Assessment ■ Appointed Person ■ Method Statement
■ Risk Assessment ■ Lift Supervisor ■ Slinger/Signaller ■ Planning and Co-ordination ■ Crane and Transport Packages ■ Lifting Equipment Project/Contract Packages

Training Modules for:

Appointed Person ■ Lift Supervisor ■ Slinger/Signaller
■ Crane Operator

It is your legal obligation to ensure that every lifting operation is planned and controlled.

Governing Regulations:

BS7121

Part 1: 2006 - Safe Use of Cranes 2006

Part 3: 2000 - Safe Use of Mobile Cranes

LOLER

The Lifting Operations and Lifting Equipment Regulations 1998

PUWER

The Provision and Use of Work Equipment Regulations 1998

Lift Division

Our maintenance packages are tailored to suit our clients and designed to assist in controlling budget expenditure and cost fixing throughout the year.

Standard Maintenance Agreement

- Covering Routine Maintenance at agreed intervals
- Annual Assessment

Standard Maintenance Agreement Plus

- Covering Routine maintenance at agreed intervals
- Annual Assessment
- Emergency Call Outs (Labour Only)

Comprehensive

- Covering Routine maintenance at agreed intervals
- Annual Assessment
- Emergency Call Outs
- Replacement of minor lift components

Comprehensive Plus

- Covering Routine maintenance at agreed intervals
- Annual Assessment
- Emergency Call Outs
- Replacement of minor lift components
- Replacement of major lift components

We supply and install a wide variety of lifts to suit all our customers different needs.

Passenger/Good Lifts

Hydraulic/Traction/Lifts of varying capacities. Service Lifts for Restaurants and Hotels, Scenic Lifts for Hotels, Offices and Shopping Centres.

Access Lifts

Conforming to 2004 Disabled Regulations. To provide access for all persons to public buildings.

Explosion Proof Lifts

For use in the Petrochemical Industry and Other Hazardous Zones.

Platform Lifts

For Loading Bays. Together with the technology to design and construct any lift to your specification. All conforming to the relevant European Standards.

Lloyds British are providers of:

- Maintenance/inspection
- Repairs
- Modernisation/Refurbishment
- Supply of new and refurbished Lifts into the market place
- Consultation
- On Site Training

Operating from 10 locations, with Technical offices in Mexborough, our team of engineers is available 24 hours a day to service the needs of our clients.



Access Division



Lloyds Access Division – distributors of innovative Access Equipment as installed on many of the UK's most prestigious buildings.

Providing all your access needs including New and Replacement Building Maintenance Units including:-

- Maintenance and Inspection service in accordance with LOLER regulations, using only Trained, experienced and Competent engineers
- Refurbishment and upgrade in accordance with the latest EN and British Standards
- Safety Harness Wire Systems
- Training Service on all makes of BMU's
- Monorails
- Davits
- Powered, Semi-Powered and Manual Equipment



Lloyds British Training

Lloyds British Training Services is one of the UK's leading training providers in the field of general safety and materials handling and is firmly established as a truly worldwide training body organisation.

With a prestigious portfolio of clients ranging from small enterprises to major blue chip companies, many of the world's major organisations rely on Lloyds British to improve safety standards by training their employees. Without doubt the market leader in Lifting and Slings training, Lloyds British can offer over 80 separate programmes of workplace instruction to meet the requirements of most industries and workplace environments.

Courses can be delivered for operative level personnel through to Instructor standard and assess and test and / or refresher programmes are also available. All programmes can be delivered onsite and certification, licensing and exhaustive course hand outs are provided.

As Industry leader in professional standards, our associations with LEEA and other professional bodies confirm our status as a natural choice for statutory and general safety training. With the capability to also provide advice and guidance Lloyds British can act as safety practitioners performing workspace safety functions on your behalf.



USE LLOYDS, THE LEADER IN THE FIELD

Visit our website – www.lloydsbritishtraining.com or call 0870 197 5575 and speak to one of our specialists.

A WORLDWIDE TRAINING SERVICES PROVIDER

Training Course Portfolio

The following courses are available on request and can be run on your premises or at a venue of your choice

General Safety

Health & Safety for Directors
Health & Safety for Line Managers and Supervisors
Workplace Risk Assessment
Display Screen Equipment Assessment
Manual Handling Assessment
Practical Manual Handling - 1/2 Day or 1 Day
Practical Manual Handling Instructional Techniques
Personal Protective Equipment
Office Safety
Accident Investigation

How to Prevent R.S.I./W.R.U.L.D's in the Workplace
Permits to Work
Pressure Systems
Safety Reps & Committees
Practical Use of Chainsaw
Confined Spaces
Portable Appliance Testing
N.E.B.O.S.H. National General Certificate
Violence & Personal Safety at Work
I.O.S.H. Managing Safely
Driver Safety Awareness
Power Press
Still Saw Operation
Excavation Safety

Working at Height

Mobile Elevating Work Platforms
Mobile Access Towers
Ladder Safety and Inspection
Safe Use and Inspection of Harness
Inspection of Tied and Fixed Scaffolding

Construction

Construction, Design & Management
Planning Supervisor
Safety on Construction Sites
Controlling Contractors Onsite

Fire

Fire Safety
Practical Use of Fire Extinguishers
Fire Risk Assessment

Crane Operations - Slinging

Pendant Overhead Crane Operation & Slinging
Overhead Crane Operation Cab Controlled
Inframatic Crane Operation & Slinging
Radio Control Crane Operation & Slinging
Slinging/Signaller/Banksman
Lorry Mounted Crane
Rigging - Basic, Intermediate, Advanced
Mobile Crane Operation
Overhead Travelling Crane Maintenance
Dockside Crane Operation
Dockside Crane Operation Grab Duties
The Appointed Person
The Crane Supervisor
Lifting Equipment Inspection - User
Lifting Equipment Inspection - Competent Person
Abrasive Wheels
The Characteristics of Wire Ropes
Passenger & Goods Lift Examination and Maintenance

Plant

Dumper Truck Operation
Excavator/Digger 180°
Excavator/Digger 360°
Hydraulic Mini Excavator
Bobcat Skid Steer
Loading Shovel
Tow Tractors
Agricultural Tractor
Ride on Roller

Truck Driving

Counterbalance Fork Lift Truck Operation
Rough Terrain Fork Lift Truck Operation
Telescopic Materials Handler
Fork Lift Truck Sideloader
Fork Lift Truck Thorough Examination
Narrow Aisle FLT (man up & down)
Order Picker FLT
Bendi Trucks
Pedestrian Trucks
Industrial Tele-truck
Container Handling
Straddle Carriers
Lorry Mounted FLT
Fourway Reach
Lorry Shunting

Occupational Health

Managing Work Related Stress
Dealing with Work Related Stress

Industrial Products Direct

Lifting Equipment

As part of the Lloyds British group, Industrial Products Direct stocks a wide range of both Commercial and Industrial equipment to suit all applications.

Operating through both a central National Contacts centre and a network of strategically placed branches throughout the UK, the division is fully supported by a dedicated team of staff who have a range of expertise and who collectively, can respond to any technical or commercial enquiries fast and efficiently, offering extensive Lifting solutions.

For technical advice and to buy online visit
www.ipdirect2u.com

Materials Handling Equipment

Industrial Products Direct specialises in providing a wide range of storage and handling equipment.

As well as many of our products being stocked at our central stores and branches throughout the UK, we can custom build equipment to customer specification through our manufacturing divisions who can also design for more specialist applications.

Our expert sales team have vast experience in this specialist market assuring customers products are tailor made to their requirements.





Safety Equipment

Falls are the third highest cause of workplace fatalities in Europe so what price would you put on your safety?

We supply a wide range of Safety Equipment including:

- Personal Fall Protection
- Work Positioning Systems
- Confined Spaces
- Rescue and Descent Systems

Lloyds British are proud to be the exclusive UK distributors for the unique Ekman Safety range, ensuring the highest quality and safety at all times.

For more information please contact our Sales Team:-

National Sales

T: 0800 035 30 35

E: sales@ipdirect2u.com

Or visit our website and **Buy Online**

www.ipdirect2u.com

Your safety is our business.

Working at Heights Legislation 2005

General inspection requirements.

Equipment for work at height requires regular inspection to ensure that it is safe to use. Formal inspection, as required by this regulation, should not be a substitute for any daily pre-use checks or routine maintenance. The nature and extent of any inspection should be determined by a competent person.

The purpose of an inspection is to identify whether the equipment can be maintained and used safely and that any deterioration is detected and remedied before it results in unacceptable risks. An inspection can vary from a simple visual check to a detailed comprehensive inspection, which may include some dismantling/testing.

The frequency of inspections should be determined by a competent person taking account of such factors as the type of equipment, how and where it is used, its likelihood to deteriorate, etc. For example if equipment is to be used in harsh outdoor conditions it may need more regular inspections than similar equipment used indoors. Periods between inspections should be reviewed in the light of experience.

Regulation 12 (6) It is necessary to record inspections, which relate to the site safety or to the work equipment so that in the event of an accident they can provide useful information. Legally they must be made available to a health and safety inspector and that is why they have to be stored in a way which is accessible and is protected from being tampered with for three months after the work has been finished. Records may be kept electronically if they are secured and capable of being printed.

“Lloyds British offer this unrivalled service, keeping you and your equipment legal.”

Your legal obligations in accordance with Power.

“Employees should ensure that work equipment is maintained in an effective state and is in an efficient working order.”

Your solution – Lloyds British safety inspection division.

- Independent assessment
- Safety inspection
- Full technical report
- Impartial best advice
- Pre-planned contract visits
- Guidance on training

Uniquely qualified and approved by the UK’s leading manufacturer of access equipment.

Lifting Guide and LOLER Legislation

This guide provides information about the legal requirements of the Lifting Operations and Lifting Equipment Regulations 1998 (LOLER) which came into force on 5 December 1998.

It gives a general indication of some of the main requirements of the Regulations. However, it is important that you refer to the Regulations and accompanying Approved Code of Practice to familiarise yourself fully with your duties.

What is LOLER?

In the main, LOLER replaced existing legal requirements relating to the use of lifting equipment, for example the Construction (Lifting Operations) Regulations 1961, the Docks Regulations 1988 and the Lifting Plant and Equipment (Records of Test and Examination, etc) Regulations 1992. Many aspects of LOLER should therefore be familiar to you.

The Regulations aim to reduce risks to people's health and safety from lifting equipment provided for use at work. In addition to the requirements of LOLER, lifting equipment is also subject to the requirements of the Provision and Use of Work Equipment Regulations 1998 (PUWER).

What does LOLER do?

Generally the Regulations require that lifting equipment provided for use at work is:

- Strong and stable enough for the particular use and marked to indicate safe working loads
- Positioned and installed to minimise any risks
- Used safely, i.e. the work is planned, organised and performed by competent people; subject to ongoing thorough examination and, where appropriate, inspection by competent people.

What Equipment is covered by the Regulations?

Lifting equipment includes any equipment used at work for lifting or lowering loads, including attachments used for anchoring, fixing or supporting it. The Regulations cover a wide range of equipment including, cranes, fork-lift trucks, lifts, hoists, mobile elevating work platforms, and vehicle inspection platform hoists. The definition also includes lifting accessories such as chains, slings, eyebolts, etc. LOLER, does not apply to escalators, these are covered by more specific legislation, i.e. the work place (Health, Safety and Welfare) Regulations 1992.

If you allow employees to provide their own lifting equipment, then this too is covered by the Regulations.

Do the Regulations apply to me?

If you are an employer or self-employed person providing lifting equipment for use at work, or you have control of the use of lifting equipment, then the Regulations will apply to you. They do not apply if you provide equipment to be used primarily by members of the public, for example lifts in a shopping centre. However, such circumstances are covered by the Health and Safety at Work etc Act 1974 (HSW Act).

While your employees do not have duties under LOLER, they do have general duties under the HSW Act and the Management of Health and Safety at Work Regulations 1992 (MHSWR), for example to take reasonable care of themselves and others who may be affected by their actions and to co-operate with others.

The Regulations cover places where the HSW Act applies – these include factories, offshore installations, agricultural premises, offices, shops, hospitals, hotels, places of entertainment etc.

What do the Regulations require me to do?

You need to ensure that in using any lifting equipment the requirements of LOLER are met.

For example, you should ensure that all lifting equipment is:

- Sufficiently strong, stable and suitable for the proposed use. Similarly, the load and anything attached (e.g. timber pallets, lifting points) must be suitable
- Positioned or installed to prevent the risk of injury, e.g. from the equipment or the load falling or striking people
- Visibly marked with any appropriate information to be taken into account for its safe use, e.g. slings, clamps, etc, should be similarly marked

Additionally, you must ensure that:

- Lifting operations are planned, supervised and carried out in a safe manner by people who are competent
- Where equipment is used for lifting people it is marked accordingly, and it should be safe for such a purpose, e.g. all necessary precautions have been taken to eliminate or reduce any risk
- Where appropriate, before lifting equipment (including accessories) is used for the first time, it is thoroughly examined. Lifting equipment may need to be thoroughly examined in use at periods specified in the Regulations (i.e. at least six-monthly for accessories and equipment used for lifting people and, at a minimum, annually for all other equipment) or at intervals laid down in an examination scheme drawn up by a competent person. All examination work should be performed by a competent person; and
- Following a thorough examination or inspection of any lifting equipment, a report is submitted by the competent person to the employer to take any appropriate action.

Pressure Systems Regulations Guide Legislation

This guide provides information about the requirements of the Pressure Systems Safety Regulations 2000 (PSSR 2000) and gives advice on minimising the risks when working with systems or equipment containing a liquid or gas under pressure.

It gives a general indication of the main requirements of the regulations but you should familiarise yourself with your duties by referring to PSSR 2000 and the accompanying Approved Code of Practice L122.

What is PSSR 2000?

PSSR 2000 replaces the Pressure Systems and Transportable Gas Containers Regulations 1989 which has been revoked.

PSSR 2000 does not cover transportable gas cylinders or tanks which are covered by separate legislation.

To comply with the European Community Pressure Equipment Directive, Great Britain has implemented the Pressure Equipment Regulations 1999 (PER 1999) and the Pressure System Safety Regulations 2000 (PSSR 2000).

PER 1999 is primarily concerned with the design, manufacture and installation of pressure systems. PSSR 2000 is primarily concerned with the risks created by a release of stored energy through system failure. It is not concerned with hazardous nature of the system contents with the exception of the scalding effects of steam.

The Pressure Systems Safety Regulations 2000 is concerned with steam at any pressure, gases which exert a pressure in excess of 0.5 bar above atmospheric pressure and fluids which may be mixtures of liquids, gases and vapours where the gas or vapour phase may exert a pressure in excess of 0.5 bar above atmospheric pressure.

What Equipment is covered by PSSR 2000?

Generally, pressure systems and equipment operating in excess of 0.5 bar above atmospheric pressure where the combined pressure times volume exceeds 250 bl where "b" is the pressure in bars (1 bar is approximately 14.5 p.s.i. above atmospheric pressure) and "l" is the volume in litres.

Examples are:-

- Boilers and steam heating systems
- Pressurised process plant and piping
- Compressed air systems
- Pressure cookers, autoclaves and retorts
- Heat exchangers and refrigeration plant
- Valves, steam traps and filters
- Pressure gauges and level indicators
- Self contained breathing apparatus sets

Installed systems are the responsibility of the owner except where the owner does not have a place of business or agent in Great Britain when the responsibility rests with the user.

What are the main causes of failure?

- Unsuitable equipment and/or system design
- Poor installation
- Poor maintenance of the system or equipment
- Poor training of operators and operator error
- Inadequate repairs or modifications

What are the risks associated with system or equipment failure?

- Personal injury from impact of the blast of an explosion or release of compressed liquid or gas
- Personal injury from impact of parts of equipment from such a blast
- Damage to equipment and/or buildings from blast or impact
- Contact with released gas or liquids and especially steam
- Fire resulting from a blast or from escaping liquids or gases

Do the Pressure Systems Safety Regulations 2000 apply to me?

As an employer or self employed person you have a duty to provide a safe workplace and safe work equipment (Health & Safety at Work etc. Act 1974 and the provision and Use of Work Equipment Regulations 1998).

The aim of PSSR 2000 is to prevent serious injury from the hazard of stored energy as a result of the failure of a pressure system or one of its component parts.

You have a duty, therefore, to ensure that the system is properly designed, properly installed, operated safely, properly maintained, properly repaired or modified and that the operators have been properly trained.

The regulation also places duties on designers, manufacturers and persons who supply equipment or components intended to be part of a pressure system to ensure that it is fit for the purpose.

What do the regulations require me to do?

- Provide a safe and suitable system and equipment which complies with the Pressure Equipment Regulations 1999 and the Pressure Systems Safety Regulations 2000
- Ensure that the system and equipment has been designed and manufactured from suitable materials
- Take care when repairing or modifying the system
- Know the operating conditions including temperature, pressure, type of gas or fluid being stored and the safe operating limits of the system
- Ensure that employees have full access to operating instructions and are properly trained in the operation and use of the system
- Ensure that the system is fitted with adequate protective devices and that such devices have been adjusted to the correct settings
- Ensure that the protective devices are kept in good working order at all times and that they cannot be altered except by an authorised person
- Carry out regular and suitable maintenance programme for the system There should be a maintenance programme for the system which takes into account the system and equipment age, its usage and the environment

- A Written Scheme of Examination is mandatory for most pressure systems as a requirement of the Pressure System Safety Regulations 2000

The Written Scheme of Examination must be prepared (or certified as suitable) by a competent person before the pressure system is operated.

The Written Scheme of Examination must cover all protective devices, vessels and pipework which, if they fail, may give rise to danger.

The Written Scheme of Examination must specify the nature and frequency of examinations and include any special measures that may be needed to prepare a system for a safe examination.

The pressure system must be examined in accordance with the Written Scheme of Examination by a competent person.

- Choose a Competent Person.

You must select a competent person and satisfy yourself that the competent person has the necessary knowledge, experience and independence to undertake the functions required.

The competent person carrying out the examinations under the Written Scheme of Examination does not necessarily need to be the same one who prepared or certified the scheme as suitable.

The Competent Person may be :-

- An individual person (e.g. self employed)
- An organisation providing independent inspection services
- A company's in-house inspection department

The level of expertise needed by the competent person depends on the size and complexity of the system as defined in PSSR 2000 as minor, intermediate and major systems.

- Keep proper records

Remember that generally, Installed systems are the responsibility of the user.

Mobile systems are the responsibility of the owner.

Work Equipment Guide and PUWER Legislation

IMPORTANT NOTE

A copy of the Written Scheme of Examination along with a record of examinations, modifications, repairs or additions must be made available to a competent person carrying out an examination and to a representative of the Health and Safety Executive on demand.

This guide provides information about the legal requirements of the Provision and Use of Work Equipment Regulations 1998 (PUWER) which came into force on 5 December 1998.

It gives a general indication of some of the main requirements of the Regulations. However, it is important that you refer to the Regulations and accompanying Approved Code of Practice to familiarise yourself fully with your duties.

What is PUWER?

PUWER replaces the Provision and Use of Work Equipment Regulations 1992 and carries forward these existing requirements with a few changes and additions, for example the inspection of work equipment and specific new requirements for mobile work equipment. Many aspects of PUWER should therefore be familiar to you.

The Regulations require risks to people's health and safety, from equipment that they use at work, to be prevented or controlled. In addition to the requirements of PUWER, lifting equipment is also subject to the requirements of the Lifting Operations and Lifting Equipment Regulations 1998.

What does PUWER do?

In general terms, the Regulations require that equipment provided for use at work is:

- Suitable for the intended use;
- Safe for use, maintained in a safe condition and, in certain circumstances, inspected to ensure this remains the case;
- Used only by people who have received adequate information, instruction and training
- Accompanied by suitable safety measures, e.g. protective devices, markings, warnings.

What equipment is covered by the regulations?

Generally, any equipment which is used by an employee at work is covered, for example hammers, knives, ladders, drilling machines, power presses, circular saws, photocopiers, lifting equipment (including lifts), dumper trucks and motor vehicles. Similarly, if you allow employees to provide their own equipment, it too will be covered by PUWER and you will need to make sure it complies.

Work equipment must meet all the requirements of the Regulations from 5 December 1998. However, requirements relating to certain aspects of mobile work equipment (see below) do not apply to such equipment (provided for use in the business before 5 December 1998) until 5 December 2002. HSE information sheet MISC156 should be read if you use hired mobile work equipment, see Further information.

Examples of uses of equipment which are covered by the Regulations include starting or stopping the equipment, repairing, modifying, maintaining, servicing, cleaning and transporting.

Do the Regulations apply to me?

If you are an employer or self-employed person and you provide equipment for use at work, or if you have control of the use of equipment, then the Regulations will apply to you.

They do not apply to equipment used by the public, for example compressed air equipment used in a garage forecourt. However, such circumstances are covered by the Health and Safety at Work etc Act 1974 (HSW Act).

While your employees do not have duties under PUWER, they do have general duties under the HSW Act and the Management of Health and Safety at Work Regulations 1999 (MHSWR), for example to take reasonable care of themselves and others who may be affected by their actions, and to co-operate with others.

The Regulations cover places where the HSW Act applies — these include factories, offshore installations, offices, shops, hospitals, hotels, places of entertainment etc. PUWER also applies in common parts of shared buildings and temporary places of work such as construction sites. While the regulations cover equipment used by people working from home, they do not apply to domestic work in a private household.

What do the Regulations require me to do?

You must ensure that the work equipment you provide meets the requirements of PUWER. In doing so, you should ensure that it is:

- Suitable for use, and for the purpose and conditions in which it is used;
- Maintained in a safe condition for use so that people's health and safety is not at risk
- Inspected in certain circumstances to ensure that it is, and continues to be carried out by a competent person (this could be an employee if they have the necessary competence to perform the task) and a record kept until the next inspection.

